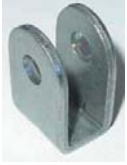
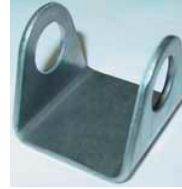


U-Brackets



Item: 738
 Stand-off: 7/8
 Hole Diam: 5/16
 Thickness: 1/8
 Height: 1 3/8
 Width: 5/8
 Gap: 7/16



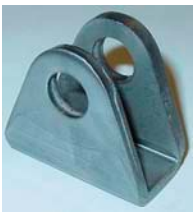
Item: 771
 Stand-off: 1
 Hole Diam: 3/4
 Thickness: 1/8
 Height: 1 5/8
 Width: 2
 Gap: 1 5/8



Item: 715
 Stand-off: 7/8
 Hole Diam: 3/8
 Thickness: 1/8
 Height: 1 5/16
 Width: 1 1/8
 Gap: 1/2



Item: 709
 Stand-off: 1 1/8
 Hole Diam: 7/16
 Thickness: 1/8
 Height: 1 5/8
 Width: 1 1/2
 Gap: 1



Item: 704
 Stand-off: 1 1/8
 Hole Diam: 1/2
 Thickness: 3/16
 Height: 1 5/8
 Width: 1 3/4
 Gap: 5/8



Item: 770
 Stand-off: 1
 Hole Diam: 1/2
 Thickness: 1/8
 Height: 1 7/8
 Width: 3
 Gap: 1 1/8

L-Brackets



Item: 806
 Stand-off: 1 1/8
 Hole Diam: 3/8
 Thickness: 3/16
 Height: 1 1/2
 Width: 1 1/2
 L: 1 1/2 x 1 1/2



Item: 855
 Stand-off: 1 1/8
 Hole Diam: 3/8
 Thickness: 1/8
 Height: 1 7/8
 Width: 1 1/2
 L: 7/8



Item: 830
 Stand-off: 1 1/8
 Hole Diam: 3/8
 Thickness: 1/8
 Height: 1 1/2
 Width: 3
 Hole Pattern: 2 x 2



Item: 840
 Stand-off: 1 5/8
 Hole Diam: 3/8
 Thickness: 1/8
 Height: 2
 Width: 4
 Hole Pattern: 3 x 3

Base Plates



Item: 74040
 Plate: 4 x 4
 Hole Pattern: 3 x 3
 Thickness: 3/16



Item: 74030
 Plate: 5 x 3
 Hole Pattern: 3 x 1 3/4
 Thickness: 3/16



Item: 73030
 Plate: 3 x 3
 Hole Pattern: 2 x 2
 Thickness: 3/16

Mini Welding Table

Small welding table or fixture table. 100% Steel. Many uses -- weld, assemble, cut or fabricate. Use in many places -- shop, service truck, home, or at the race track. Handle for welding ground or easy carrying. Stores easily in small space. Top: 15" x 12" x 1/2". Bottom: 12" x 12" x 3/8". Height: 8". Weighs 48 lbs.



80012